

PROFESSIONAL PEST MANAGEMENT

STOP PESTS IN THEIR TRACKS WITH CONTROL THAT LASTS

It's important to choose an insecticide with comprehensive, long-lasting control to avoid the threat of callbacks and wasted technician time. With the active ingredient *lambda-cyhalothrin*, **Demand® CS** and **Demand® G** insecticides from Syngenta are two options pest management professionals can rely on to provide residual pest control in easy-to-use formulations.

 **Demand® CS**
Insecticide

 **Demand® G**
Insecticide

FOR LIFE UNINTERRUPTED™



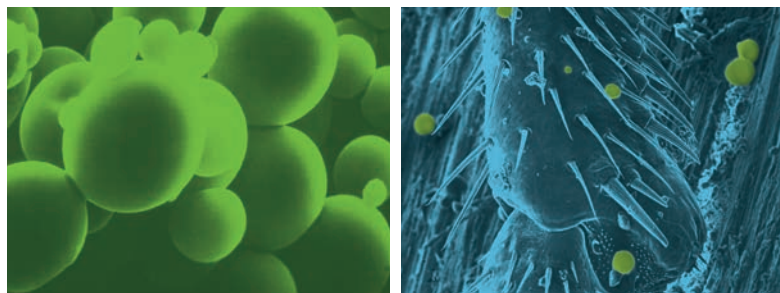
syngenta®

DEMAND CS: CONVENIENCE FOR YOUR BUSINESS

Demand CS provides comprehensive protection against more than 30 pests such as ants, cockroaches and mosquitoes. This product is low-odor and non-staining, and its proprietary, capsulated suspension formulation stays mixed so it won't clog equipment. Its formulation also provides fast knockdown and outstanding residual control that can last up to 90 days.

A POWERFUL FORMULATION WITH ICAP TECHNOLOGY

Demand CS is equipped with iCAP technology™, a unique and proven formulation technology developed by Syngenta. Smaller microcaps release the active ingredient quickly for immediate control, while larger microcaps release the active ingredient later for long-lasting, residual control. These microcaps set Demand CS with iCAP technology apart from any other microcapsule formulation on the market.



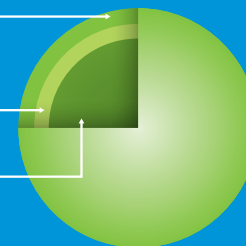
The lipophilic microcaps, shown in green, adhere to the insect's waxy exoskeleton and are easily passed to other insects for thorough control.

THE MAKEUP OF A MICROCAP

Smooth outer layer:
protects the active ingredient
from sunlight and pH extremes

Spongy inner layer:
controls release rate

Active ingredient



NOT ALL MICROCAPS ARE THE SAME

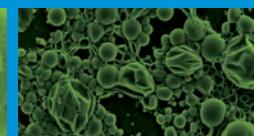
Microcaps can degrade prematurely from heat, UV light and pH extremes. Demand CS is made with durable microcaps to withstand the elements.



Demand CS capsule
remains intact
under heat and
pressure.



Cyhalocap® CS
insecticide capsule
is damaged under
heat and pressure.



Fendona® CS
insecticide
capsules rupture
upon exposure
to heat and/or
low pressure.



LambdaStar®
insecticide capsule
fully collapses under
heat and pressure.



Cyonara™ 9.7
insecticide has
crystals – no
microcaps.

DEMAND G: ADVANCING GRANULAR PERIMETER PEST CONTROL

Demand G is a granular insecticide that is labeled for control of more than 30 pests. It can be used for lawn, landscape and perimeter use and shows no visible staining on surfaces such as brick, tile and concrete.

The Active Release technology in Demand G harnesses the power of *lambda-cyhalothrin* in a granular form. In its original state, the granule is infused with the active ingredient. With the control of Active Release technology, the active ingredient is quickly released from the granule and onto the surface where the granule was applied, increasing the area of treated surface. Insects are then exposed to the active ingredient, resulting in efficient control.



Granule at application



Active ingredient releasing



Complete active ingredient releasing

WHICH DEMAND IS RIGHT FOR YOU?

Demand CS and Demand G offer unique benefits for certain pest control circumstances. The following table outlines key differences in attributes, application methods and more:

Demand CS	Demand G
9.7% active ingredient	0.045% active ingredient
1 qt. squeeze-and-measure; 8 oz. package	Granules in resealable 25 lb. bag
Use as a perimeter, spot or crack-and-crevice application around a structure	Use in areas that are hard to treat with a liquid application, including harborage sites away from a structure and/or outdoor areas with turf and ornamental ground cover or dense vegetation
Formulation adheres to insects' exoskeletons as they travel along treated surfaces	Granules readily sift down to where eggs and/or larvae develop for fleas, ants, peridomestic cockroaches, occasional invaders and other perimeter pests
Can be used in food-handling establishments as directed by the product label	Can reduce breeding flies, midges and other urban pests associated with turf areas and pet waste areas

WHEN SHOULD YOU USE DEMAND CS AND DEMAND G TOGETHER?

Demand CS and Demand G can be used within a multi-layered approach to target numerous pests.* Below are sample scenarios that would be ideal for using the products together:

- ▶ Use Demand CS up and around the foundation of a structure, while using Demand G to build a larger buffer zone around the structure and/or at potential harborage sites, resulting in two concentric rings of protection
- ▶ Use Demand CS in areas that can be easily saturated with a sprayer, while focusing Demand G applications in dense vegetation, areas where drift is a concern or areas with large river rocks or other difficult-to-manage substrates
- ▶ Demand G can be effective in combination with high- and low-volume applications of Demand CS for perimeter control
 - For more information on high- and low-volume applications, view the “Examples of Dilutions for Structural Perimeter Barrier Applications” table on the Demand CS label



With a proven track record of success, Syngenta products are designed to help you get the job done right the first time. Give your customers peace of mind by controlling numerous pests with Demand CS and Demand G.

For trial data, testimonials and more information, please visit SyngentaPMP.com/DemandCS and SyngentaPMP.com/DemandG

FOR LIFE UNINTERRUPTED™



@SyngentaPest #DemandCS

syngenta®

All photos are either the property of Syngenta or are used with permission.

*Always refer to the product label for full use recommendations.

© 2021 Syngenta. **Important: Always read and follow label instructions. Some products may not be registered for sale or use in all states or counties and/or may have state-specific use requirements. Please check with your local extension service to ensure registration and proper use.** The trademarks displayed or otherwise used herein are trademarks or service marks of a Syngenta Group Company or third parties. Syngenta Customer Center: 1-866-SYNGENT(A) (796-4368).

GS 6876_5_14

LGC 2400B 06-2021